

# ***Press-Book Poland Syndrome***



3D custom-made implants

***Type 1 : Correct subcutaneous plane***

***Type 2 : More atrophic subcutaneous plane***

***Type 3 : Atrophy of the subcutaneous plane with thoracic deformation***

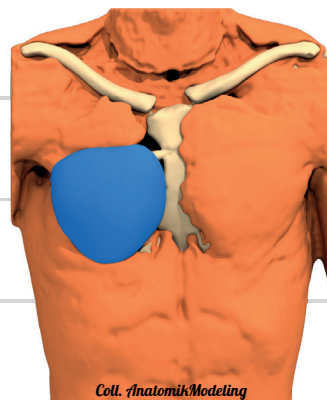
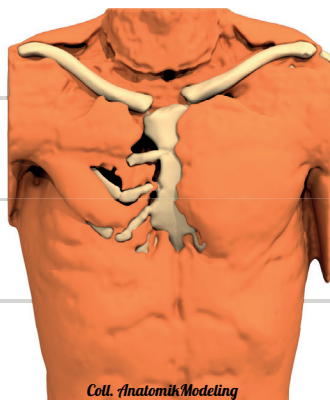
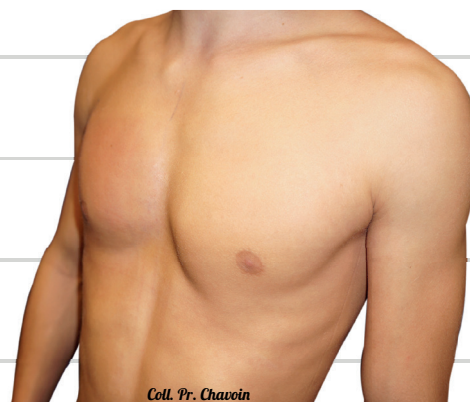
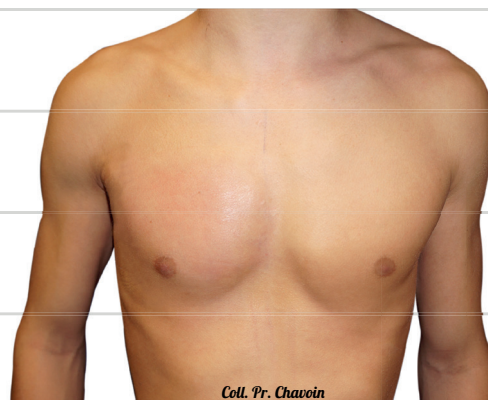
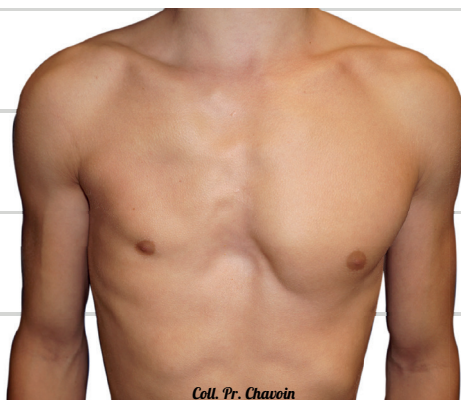
***Type 4 : Redo of previous correction failure (Latissimus Dorsi Flap, breast implants)***

*Type : 1*

*Male*

*Before*

*1 year later*

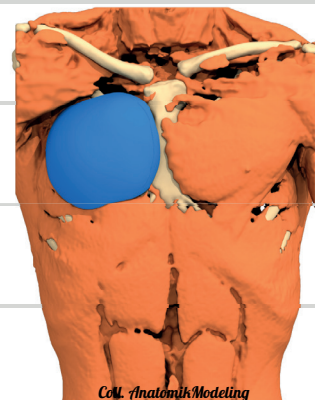
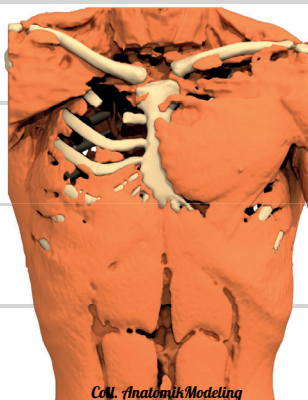


*Type : 2*

*Male*

*Before*

*3 months later*



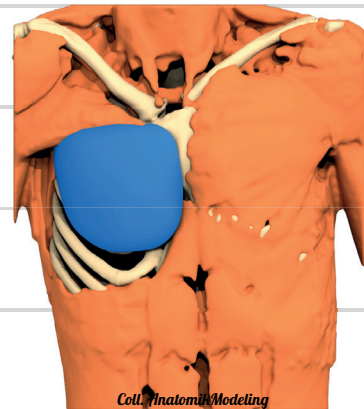


*Type : 3*

*Male*

*Before*

*3 months later*



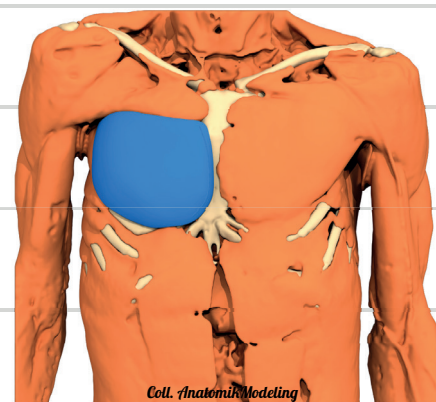
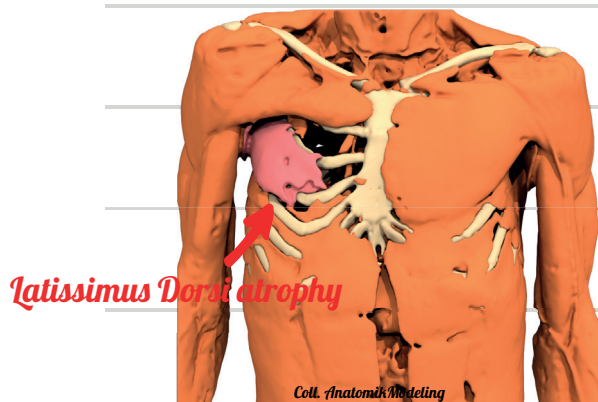
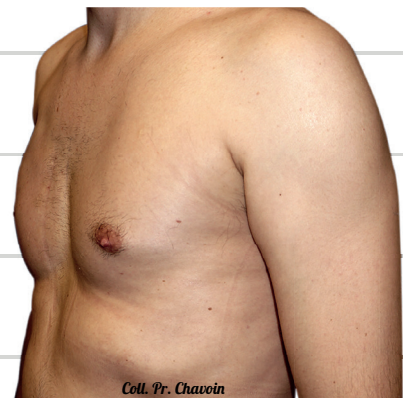
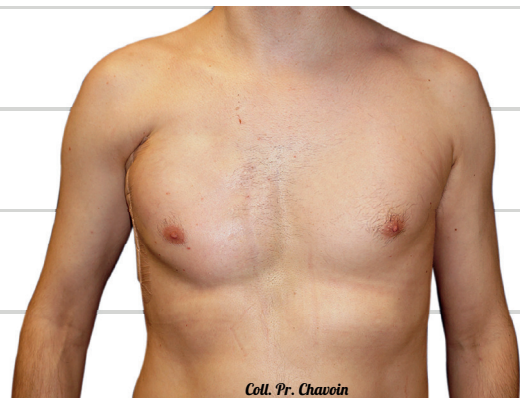


*Type : 4*

*Male*

*Before*

*3 months later*



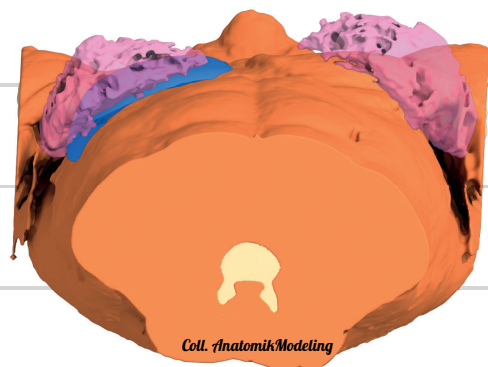
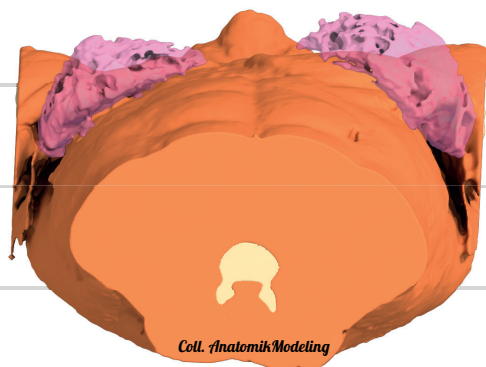
*Latissimus Dorsi atrophy*

*Type : 1*

*Female*

*Before*

*3 months later*



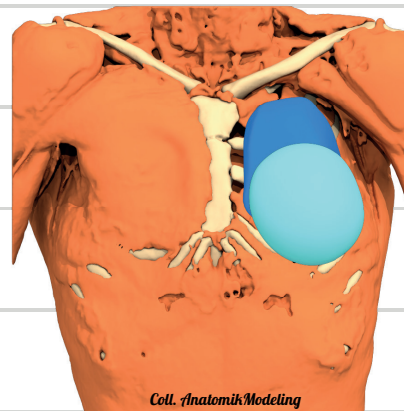
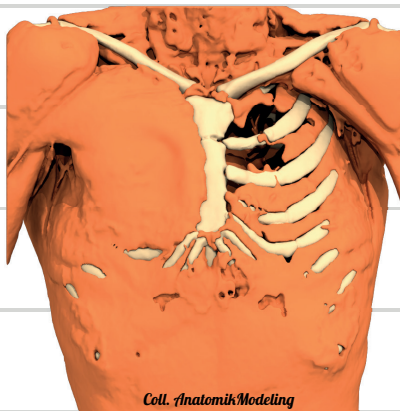
*Type : 2*

*Female*

*Before*



*1 year later*  
*(with a left mammary implant*  
*6 months after the operation)*



3D custom-made implants



*Type : 3*

*Female*

*Before*

*1 year later*  
*(with a left mammary implant*  
*6 months after the operation)*



**Type : 4**

**Female**

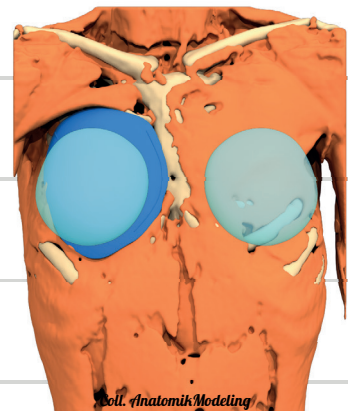
**Before**



**1 year later**  
(with mammary implants  
6 months after the operation)



**Failure of Right Poland correction  
with mammary implants**



**First : mammary implants removal and  
3D thoracic implant implementation  
Then : new mammary implants**